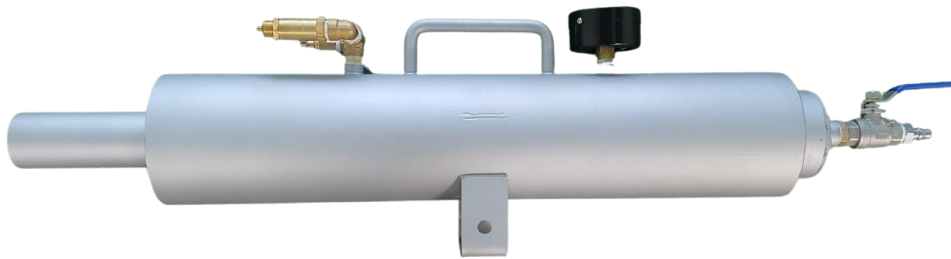


**ESG ratings rise, risk assessment scores rise, and the Serious Accident Punishment Prevention**

## **HEAVING LINE LAUNCHER GUN**



### **Specification**

#### **HORIZONTAL RANGE(20~45degree)**

Mpa/Bar	0.4	0.5	0.6	0.7	0.8
<b>M</b>	65	70	80	88	95

#### **Compressed air type**

MODEL	Overall length (mm)	Diameter of body (mm)	Diameter of barrel (mm)	Length of barrel (mm)	Max. working pressure (MPa)	Storage dimension (W*L*H)	WEIGHT (kg)
<b>ETG-100</b>	830	160	115	550	0.9	900*350*250	8

Specification may change without notice.

## Use Purpose

Heaving line launcher gun shoots a strong force to launch a Heaving line that goes safely and conveniently to a distant location, even in strong winds, and it is launched to the port.



Mooring Operation

Used for various mooring operations such as docks, coasts, offshore, river and lake.

It can be used for emergency rescue operations at sea, river, lake. It can also be used for throwing a line to rescue a person in the water or for pulling rescuers to a ship, and it is suitable for use by coastal guards and other rescue agencies.



Rescue Activities

It is used for rescue activities in various places such as docks, coasts, seas, rivers, and lakes.

## Ship to Ship transfer

1. Ship to Ship operation is the transfer of cargo between sailing vessels located alongside each other while at rest or underway.
2. This work is done on various ships and offshore plants including special ships LNG carriers, LPG carriers, Bulk ship, Containerships, Oil tankers, Cruise ships, Offshore plants, Barge Ship, Special ships and Military vessels.

## Use Location



**Ship**

It can be used on various types of vessels, including LNG carriers, containerships, oil tankers, cruise ships, offshore plants, and military vessels.



**Offshore & Onshore**

It can be used for construction and maintenance operations of offshore or onshore plants and structures.



**Sea Operations**

It can be used for work and structural purposes during sea operations near a power plant.



**Mountain rescue operation**

It can be used for rescuing individuals stranded or in distress in mountainous areas.

**HEAVING LINE LAUNCHER GUN** that can increase the **ESG Social** sector evaluation grade, increase the **risk assessment** evaluation score, and prepare for the **Serious Accident Punishment Act**

It can be applied to safety, shared growth, and customer relationships in S (SOCIETY) during ESG evaluation.

We have summarized the applicable items of our product through the ESG factor table.

## B.6 SOCIAL PERFORMANCE

Social performance focuses on a company manages its relationship with employees, customers, communities and other stakeholders. It includes the company's efforts to promote well-being, diversity and inclusion, human rights, labor practices and community engagement.

If you are reporting under GRI, see examples below. A free registration will be needed to access the content in the GRI Website.

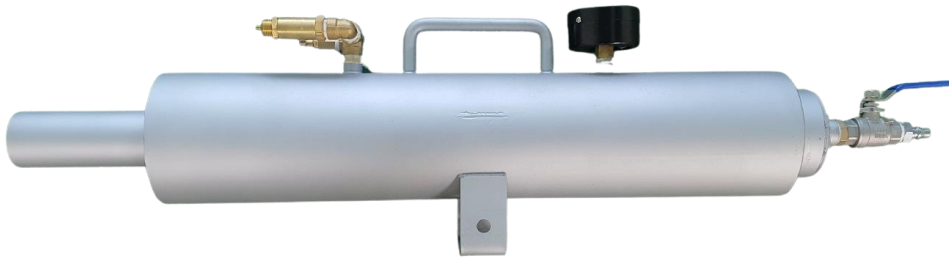
GRI Topic	Disclosure
GRI 2 General Disclosures 2021 2. Activities and workers <a href="#">Learn More</a>	2-6 Activities, value chain and other business relationships 2-7 Employees 2-8 Workers who are not employees
GRI 202 Market Presence 2016 <a href="#">Learn More</a>	202-1 Ratios of standard entry level wage by gender compared to local minimum wage 202-2 Proportion of senior management hired from the local community
GRI 401 Employment 2016 <a href="#">Learn More</a>	401-1 New employee hires and employee turnover 401-2 Benefits provided to full-time employees that are not provided to temporary or part-time employees 401-3 Parental leave
GRI 402 Labor/Management Relations 2016 <a href="#">Learn More</a>	402-1 Minimum notice periods regarding operational changes
GRI 403 Occupational Health and Safety 2018 <a href="#">Learn More</a>	403-1 Occupational health and safety management system 403-2 Hazard identification, risk assessment, and incident investigation 403-3 Occupational health services 403-4 Worker participation, consultation, and communication on occupational health and safety 403-5 Worker training on occupational health and safety 403-6 Promotion of worker health 403-7 Prevention and mitigation of occupational health and safety impacts directly linked by business relationships 403-8 Workers covered by an occupational health and safety management system 403-9 Work-related injuries 403-10 Work-related ill health

## Key Features

1. Price less than 50% of existing product. It's over 50% cost saving.
2. It has Pneumatic Explosion Prevention features, so it is safe.
3. It is a light product. The weight is 8KG
4. It is used by connecting to existing air piping or It works by 1hp low-pressure compressor
5. Our Product does not need Consumable parts, So the maintenance cost is not need.
6. As a stainless steel product, it is resistant to operation by seawater and has excellent durability.

## Equipment and Accessories

### 1. HEAVING LINE LAUNCHER GUN



### 2. HEAVING LINE



### 3. HEAD



## Specification Comparison

SPECIFICATION	MROVIA	Other maker 1	Other maker 2
Material	Stainless	Plastic	Stainless
LAUNCHER Range(6BAR)	Max 80M	Max 80M	Max 80M
Shooting method	1. Use of the existing Air pipe line or 2. <b>1HP compressor Available</b>	1. It's need to 200Bar pressure 2. Separate high-pressure compressor for the heaving line is required, and consumable parts need to be charged regularly.	Existing Air pipe line
Maintenance cost (Consumables)	No Maintenance cost No Consumables	"Air cylinder charging cylinder (Approximately 20 uses)"	-
Price / Product time	Price less than 50% of existing product / 7~10Days	"Price more than twice that of MROVIA product"	"Price more than twice that of MROVIA product" / 90Day

## HEAVING LINE LAUNCHER GUN

### CHARACTERISTICS

1. Light weight easy handling and installation.
2. Start-up operation from loading to discharging has come to simple.
3. It is very simple to take on and off the coupler even at the pressure of 0.7~0.8MPa. In addition air intake is very easy to be controlled at the level of appointed pressure with the valve.
4. Rubber ball can be applied for oil tanker without any problem from its explosion proof.
5. The body is made by stainless(sus304, some part of the accessories is MC/BC), which gives easy maintenance.

### Operation from loading to discharging

#### Note

1. Do not pump up the compressed air over than 0.9MPa.(the safety valve open at 1.08MPa)
2. After air charging. Be care of barrel top direction, in particular, and never extend your hands over barrel muzzle of peep in its inside.
3. Do not launch the unit as it is kept level. Take on elevation angle as shown in item 5 by all means so that the rubber ball flies describing a parabola.
4. Do not push the head all the way into the launcher with a long stick.

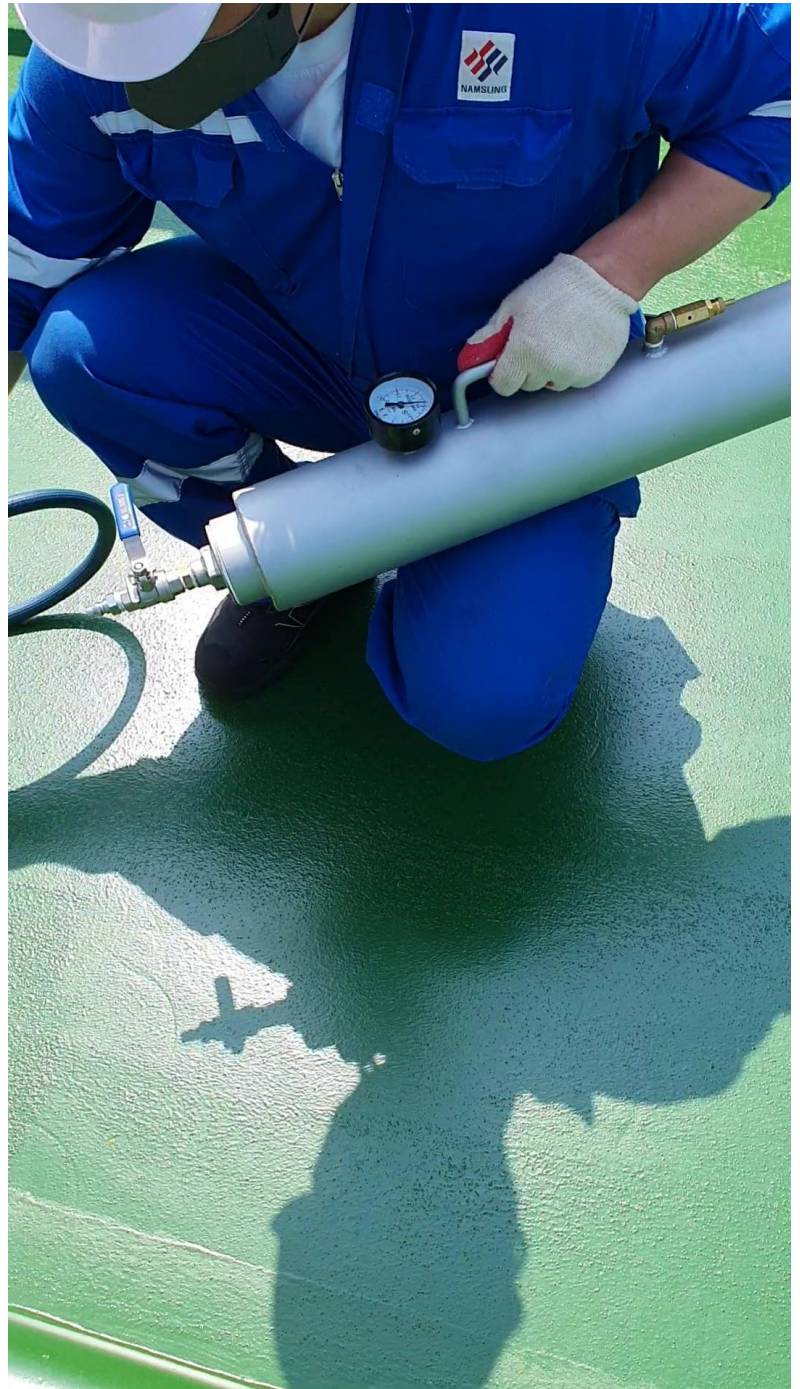
## Method of Operation

### Preparation before discharging

1. Set the unit on the specified location and connect the attached Air hose to the compressed air source of the vessel (Air piping or low-pressure compress : 1hp or higher).

2. One end of the attached rope must be securely fastened to the hole of a rubber head so that it may not come off.

3. Upright the rope in order, place it into a container (wide mouthed bucket or basket, Etc.) with the other end tied up in an appropriate position.



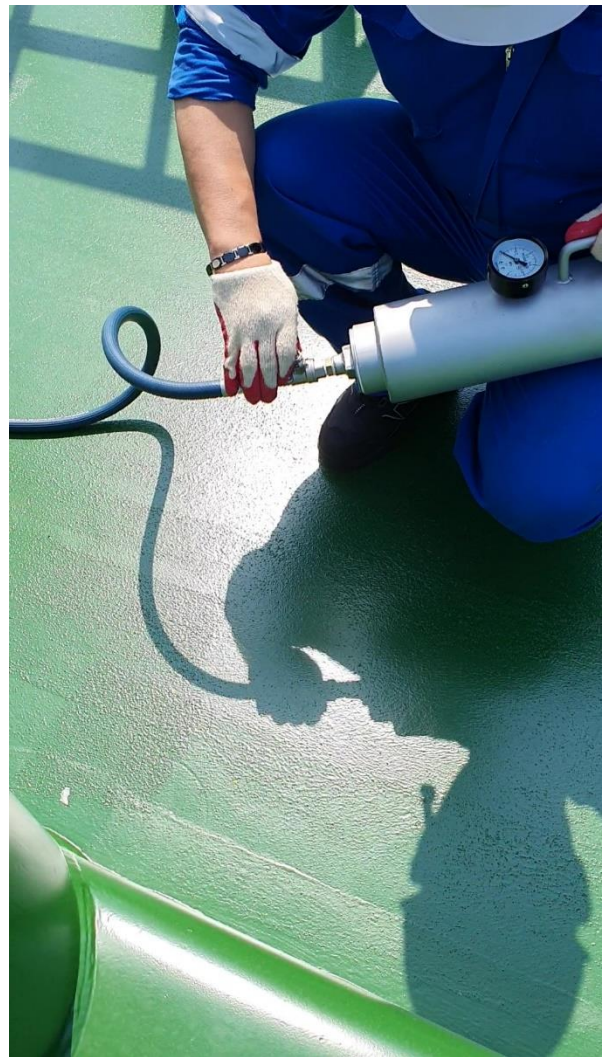
## Method of Operation

### Operation from loading to discharging

1. Ensure that the handle of the ball valve is closed.
2. Fix the socket(female) attached to one end of the air feeding hose goes into the plug(male)on the air intake valve, and open the valve to supply the air.



Connect the air hose.



Open the valve to supply Air.

## Method of Operation

### Operation from loading to discharging

3. When the internal pressure of the tank at reached the specified valve(which may be adjusted according to the trajectory range). Close the feed air valve.
4. Disconnect the air hose connected to the equipment.



When air is supplied to the desired pressure, close the valve.



Check the closed valve and disconnect the air hose.

## Method of Operation

### Operation from loading to discharging

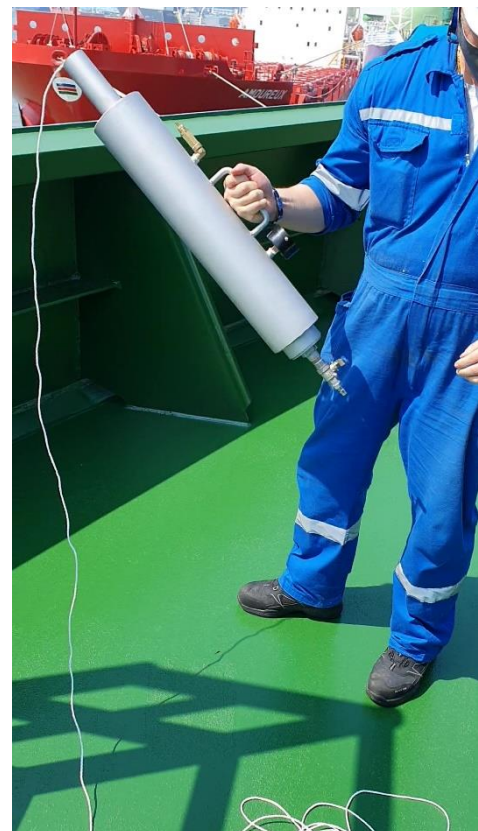
5. Insert the head into the heaving line gun. And, You shake it several times. And, Head smoothly in going to Heaving line gun Inner.

6. Do not push the head all the way into the launcher with a long stick.

If Insert the head all the way into the equipment with a long stick, the piston may be pushed, leading to a breaks down.



Put the head into the equipment.



If you shake the equipment, the head will smoothly go inward.

## Method of Operation

### Operation from loading to discharging

7. Fix direction of the unit to take an appropriate elevation angle(20~45degree) then, extract safety pin from operating valve handle and if the same handle is operating valve handle and if the same handle is operated rubber ball gets onto the target describing an arch.



Direction setting

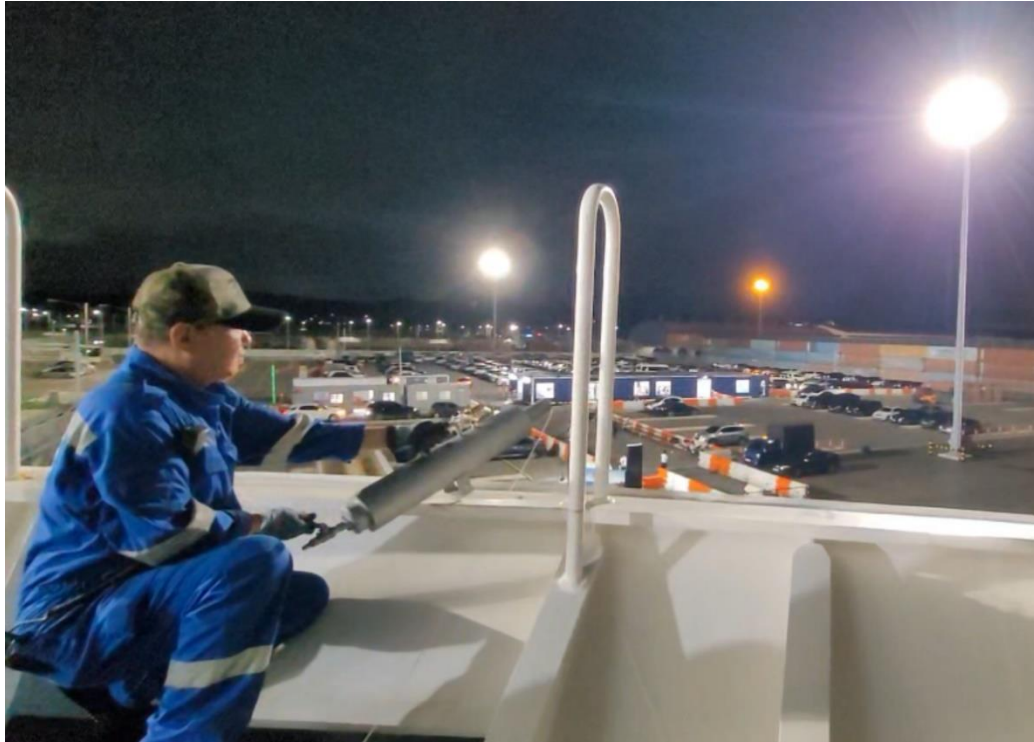


Launch

## Method of Operation

### Operation from loading to discharging

Ready for launch



Heaving line launcher gun mount type



Contact

Tel: +82-51-903-1302

Mobile: +82-10-9311-1302

Email: [info@cktechb2b.com](mailto:info@cktechb2b.com)

Website: <https://www.cktechb2b.com/>

## Product Video

### 1. YouTube Video Link

<https://youtube.com/shorts/iqZ8uD78cTY?si=geRHrn9NuTcPJYAs>

### 2. YouTube Video Link

[https://youtu.be/d7xJtr3IVzI?si=uRLX-2Lq\\_SKXlqEc](https://youtu.be/d7xJtr3IVzI?si=uRLX-2Lq_SKXlqEc)

### 3. YouTube Video Link

<https://youtu.be/4FFdCwqrbmE?si=xodEAgqemHTOuOyw>

## Video of throwing a heaving line by hand

[Video of throwing a heaving line by hand](#)

[https://www.youtube.com/shorts/82UI\\_DdcMII](https://www.youtube.com/shorts/82UI_DdcMII)

<https://www.youtube.com/shorts/yNjDmqLDG2U>

<https://www.youtube.com/shorts/7sTemQAWJhcShip to Ship>

<https://youtu.be/wQPOoM923sw?si=64V1Di9N-VzinuM2>

[https://www.youtube.com/shorts/GluMy8\\_k9io](https://www.youtube.com/shorts/GluMy8_k9io)

<https://youtu.be/XF-wLiM8Acg?si=9I1d5Z4IJKYxAG5R>

US Navy Other maker Heaving line using  
video(Gunpowder type)

<https://youtu.be/ziUm5qBFFzw?si=ncebNQJjYppZSC1W>