



MROVIA Pneumatic maintenance equipment



CKTECH



ATEX explosion-proof certified Wet with Dry Pneumatic Cleaner

Pneumatic Heaving Line Thrower

Equipment for ESG ratings rise, Risk Assessment scores rise, and Prevention of Serious Accident

PRODUCT INTRODUCTION

MROVIA / CKTECH



eNtoB



SAMSUNG



www.cktechb2b.com

Company Introduction

MROVIA Co., Ltd. is an equipment manufacturing company that prioritizes client safety and trust, increasing **ESG ratings rise**, increasing **Risk Assessment scores rise**, and **Prevent to Serious Accident**.

It has several industrial equipment brands, including explosion-proof vacuum cleaner brand CKTECH and ship equipment brand MAPE.

And it is located in Busan, South Korea, so it can respond quickly to various customers such as ship companies, shipyards, and repair shipyards.

Business

1. Product Manufacture

We manufacture various equipment for industrial and ship maintenance.

It specialize in Manufacturing alternative products that replace existing expensive and Cost-inefficient e products.

2. Alternative Products Develop

We can develop alternative products through the drawings provided by our clients.

It specialize in developing alternative products that replace existing expensive and Cost-inefficient products.

3. OEM Manufacture

We supply OEM products under our client's brands.

ESG ratings rise, Risk Assessment scores rise, and Prevention of Serious Accident

We are manufacturing pneumatic equipment that can increase the **ESG Social** sector evaluation grade, increase the **Risk Assessment** evaluation score, and prepare for the **Prevention of Serious Accident**

It can be applied to safety, shared growth, and customer relationships in S (SOCIAL) during ESG evaluation.

We have summarized the applicable items of our product through the ESG factor table.

B.6 SOCIAL PERFORMANCE

Social performance focuses on a company manages its relationship with employees, customers, communities and other stakeholders. It includes the company's efforts to promote well-being, diversity and inclusion, human rights, labor practices and community engagement.

If you are reporting under GRI, see examples below. A free registration will be needed to access the content in the GRI Website.

GRI Topic	Disclosure
GRI 2 General Disclosures 2021 2. Activities and workers Learn More	2-6 Activities, value chain and other business relationships 2-7 Employees 2-8 Workers who are not employees
GRI 202 Market Presence 2016 Learn More	202-1 Ratios of standard entry level wage by gender compared to local minimum wage 202-2 Proportion of senior management hired from the local community
GRI 401 Employment 2016 Learn More	401-1 New employee hires and employee turnover 401-2 Benefits provided to full-time employees that are not provided to temporary or part-time employees 401-3 Parental leave
GRI 402 Labor/Management Relations 2016 Learn More	402-1 Minimum notice periods regarding operational changes
GRI 403 Occupational Health and Safety 2018	403-1 Occupational health and safety management system 403-2 Hazard identification, risk assessment, and incident investigation 403-3 Occupational health services 403-4 Worker participation, consultation, and communication on occupational health and safety 403-5 Worker training on occupational health and safety 403-6 Promotion of worker health 403-7 Prevention and mitigation of occupational health and safety impacts directly linked by business relationships 403-8 Workers covered by an occupational health and safety management system 403-9 Work-related injuries 403-10 Work-related ill health
Learn More	

History

- 2021 – Registered as NtoB Partner
(Posco Group MRO company)
- 2020 - Registered as SK Group Partner
- 2019 - Public Procurement Service registration
- 2019 - Registered as a partner of IMarket Korea / Korea e Platform
(KOREA No.1 / No.3 MRO Company)
- 2016 - Founded



SAMSUNG



Reference

REPUBLIC OF KOREA Nuclear Power Plant
(Cleaning of pollutants in electrical facilities)

REPUBLIC OF KOREA Thermal Power Plant
(Cleaning of pollutants in electrical facilities)

REPUBLIC OF KOREA Air Force
(Remove contaminants in the maintenance/Repair Place)

Gyeonggi-do Economics and Science Promotion Agency 3D Printing Center(3D printer powder cleaning)

Korea Carbon Convergence Research Institute
(3D printer powder cleaning)

SAMSUNG ELECTRONIC
(Remove pollutants from explosion-protected areas)/ Stainless type)

LG CHEMISTRY(removes silica gel, desiccant)

LG Electronics (clean room cleaning)

Daewoo Shipbuilding & Marine Engineering : DSME
(Yard and Ship Block/Ship Wet Dry Pollutant Cleaning)

Samsung Heavy Industries
(Yard and Ship Block/Ship Wet Dry Pollutant Cleaning)

Hyundai Heavy Industries
(Yard and Ship Block/Ship Wet Dry Pollutant Cleaning)

NC Chem Corp
(Industrial film maker/Oil and chemical liquid removal)

MAERSK LINE (Cleaning engine room/deck/
storage and other places)

HMM (Cleaning engine room/deck/
storage and other places)

Hyundai Steel(Remove steel Powder)

Cleaner Brand : CKTECH

ATEX explosion-proof certification Wet with Dry Pneumatic Vacuum Cleaner 

Increasing **ESG** ratings, increasing **Risk Assessment** scores,
Prevention of **Serious Accident**

SP20/40/75/100 Series



Product Data	SP20 (20L)	SP40 (40L)	SP75 (75L)	SP100 (100L)
Description(WxDxH)	440X440X590	460X510X830	600X625X970	660X700X1150
탱크용량 (리터/Liter)	20 Liter	40 Liter	70 Liter	100 Liter
Air consumption (L/min)	600	600	900	1200
Air suction capacity (L/min)	6000	6000	9000	12000
Weight(Kg)	7.2	10.6	21	58
Material	High strength P.P / Stainless			
Explosion proof additional options	Anti-Static Hose / Conductive Hose (For Explosives)			

Features

- Operated by pneumatics (air), it is safe because there is no risk of electric shock / fire / explosion.
- It received ATEX certification, an international explosion-proof certification, and its performance and safety were officially recognized.
- Prevent industrial accidents that occur during work.
- It is convenient as it absorbs and removes various contaminants such as water/oil/liquids/sand/dust/remnants/ small screws/powder at once with a wet and dry method.
- With excellent durability, management costs can be drastically reduced.
- Since there is no electric motor, it is durable and does not break down.

Place of Use / Applied Facility

- Explosion-proof area / Clean Room
- Thermal / hydro/nuclear/solar/combined power plants
- Steel Mill/Petroleum & Chemical/Paint/Paper Mill
- HACCP Certified Food/Pharmaceutical Factory
- Farm/slaughterhouse/barn/ranch/farm
- Reservoir cleaning / other facility cleaning
- Shipyard/ship/offshore plant/repair shipyard/Plant
- Ship parts/ship block factory
- Navy/Air Force/Army Maintenance Depot
- Coast Guard/Police Maintenance Depot
- Aircraft/railway maintenance depot
- 3D printer facilities and raw materials for 3D printers
- Secondary battery facilities and raw materials for secondary batteries
- Other factories and facilities

ATEX explosion-proof certified

explosion proof wet dry pneumatic cleaner VS Electric cleaner

Comparison table

	ATEX explosion-proof certified explosion proof wet dry pneumatic cleaner	Electric cleaner
Power	Pneumatic	Electricity
Safety	<ol style="list-style-type: none"> ATEX Explosion Proof Certification is designed to take into account the risk of explosion, so it is very safe. There is no electric motor and operates under pneumatic pressure, so there is no risk of electric shock or fire. No risk of self-exploitation 	Available in general use environments but not safe in environments with ignition/explosion hazards (e.g. chemical, combustible dust, etc.)
economics	<p>2,500(USD), (ATEX explosion proof certified cleaner 20 liters price)</p> <p>Period of use of 8 vacuum cleaners after 4 years of use</p> <p>Period of use of 20 vacuum cleaners after 10 years of use</p> <p>Equivalent to the cost of introducing a four-year electric vacuum cleaner</p> <p>Save approximately 3,500(USD on 10-year use</p> <p>$300\text{USD} \times 2 \times 6 = 3,600$(Cost of introducing electric vacuum cleaners for 6 years)</p>	<p>$300(\text{USD}) \times 2 = 600(\text{USD})$, Electric vacuum cleaner) / 1 year standard</p> <p>$300(\text{USD}) \times 2 \times 4 = 2,400(\text{USD})$, Electric vacuum cleaner) / 4 year standard</p> <p>$300(\text{USD}) \times 2 \times 10 = 6,000(\text{USD})$, Electric vacuum cleaner) / 10 year standard</p>

ATEX explosion-proof certified

explosion proof wet dry pneumatic cleaner VS Electric cleaner

Comparison table

Durability	There is no electric motor and the air pressure difference inhales contaminants, which rarely fails 3 repairs over 10 years (ex. wheel replacement)	Replace the vacuum cleaner in the event of an electric motor overload and failure
Period of use (Replacement cycle)	Product life: At least 8 to 10 years	Product life: 3–12 months or more
Scope of use	<ol style="list-style-type: none">1. Available in hazardous areas where chemicals or combustible gases are present Can be inhaled dry, wet contaminants, water, oils, various oils, and chemical solvents2. Can clean contaminants mixed with dry-wet3. Can be used in various workplaces and industries such as explosion-proof zones, ships (pump room/engine room), semiconductors, secondary batteries, paints, chemicals, shipyards, etc	Electrical appliances suitable for dry use
Maintenance	Pneumatically operated, there are no consumables in the drive and little maintenance costs	Requires regular maintenance such as replacement of filters, motors, and cleaners

ATEX Explosion-Proof Certificate



Avviso di Ricezione

Acknowledge receipt

n. ECM 22 ATEX-AR SQ49

Rilasciata ai sensi della direttiva 2014/34/UE - Art. 13 comma 1 lettera b ii)
Issued according to 2014/34/EU directive - Article 13 paragraph 1, letter b ii)



Richiedente
Applicant
Ragione Sociale
Company Name
Indirizzo
Address
Luogo di produzione
Place of production

CKTECH CO.
#107, Building 2B, 31, Gwahaksandan 1-ro 60beon-gil, Gangseo-gu, Busan, Korea
#107, Building 2B, 31, Gwahaksandan 1-ro 60beon-gil, Gangseo-gu, Busan, Korea

Con la presente Ricevuta si dichiara che Ente Certificazione Macchine srl ha ricevuto copia del seguente fascicolo tecnico in forma sigillata:
With this receipt stating that Ente Certificazione Macchine srl has received a copy of the following technical documentation in sealed form:

Fascicolo tecnico n°
Technical file no
Tipo di componente o prodotto
Type of component or product

ECMK-CK001(A)
Wet and Dry Pneumatic Vacuum Cleaner
S-XY Series (X-P, A5, AM / Y:20,40,50,75,100)

Norme applicate:
Standard:
Contrassegni:
Symbols:

EN ISO 80079-36:2016, EN ISO 80079-37:2016, EN 1127-1:2019
Ex IIIC T6 Gb, Ex IIIC T85°C Db
Ambient temperature range -20°C to 40°C

Ente Certificazione Macchine srl conserva il Fascicolo Tecnico per 10 anni dalla produzione dell'ultimo esemplare cui esso si riferisce o dalla richiesta di revoca della custodia.
A 10 anni dalla richiesta Ente Certificazione Macchine srl provvederà alla notifica di conferma della custodia.
Ente Certificazione Macchine srl will hold the technical file for 10 years from the production of the last unit to which it relates or by the request for waiver of the case.
At 10 years of the request Ente Certificazione Macchine srl will notify the confirmation of the custody.

Valutazione (RO)
Data - Date: 23/12/2022

Timbro

Firma autorizzata
Authorized signature
Amanda Payne
(Deputy Manager)

Validità - Expiry date: 22/12/2032

Ente Certificazione Macchine srl
Via C. Della 203 - Loc. Castelli di Terraviva - 40053 Valmaggia (BO)
 Tel: +39 0516705141 - Fax: +39 0516705156 - E: ecm@entecertma.it - www.entecertma.it

Heaving Line Throwing Gun

Brand Name  **CKTECH**

Equipment for launching ropes from ship to pier and from ship to ship

When approaching the pier, when approaching the pier, a thin rope tied to a heavy mooring line is thrown to the pier, and land workers can use the thin rope to pull the mooring line to the pier more easily

Increasing **ESG** ratings,
increasing **Risk Assessment** scores,
Prevention of **Serious Accident**



Specification

Launch angle (20-45 degrees)

Mpa / /Bar (working pressure)	0.4	0.5	0.6	0.7	0.8
M(travel distance)	65	70	80	88	95

Size and maximum working pressure

MODEL	Max. working pressure	Storage dimension (W*L*H) mm	WEIGHT (kg)
ETG-100	(MPa)	900*350*250	8



Specification Comparison

SPEC	MROVIA	Other maker 1	Other maker 2
Material	Stainless	Plastic	Stainless
LAUNCHER Range(6BAR)	Max 80M	Max 80M	Max 80M
Shooting method	1. Use of the existing Air pipe line or 2. 1HP compressor Available	1. It's need to 200Bar pressure 2. Separate high-pressure compressor for the heaving line is required, and consumable parts need to be charged regularly.	Existing Air pipe line
Maintenance cost (Consumables)	No Maintenance cost No Consumables	"Air cylinder charging cylinder (Approximately 20 uses)"	-
Price / Product time	Price less than 50% of existing product / 7~10Days	"Price more than twice that of MROVIA product"	"Price more than twice that of MROVIA product" / 90Day

Wire Rope Lubricator (Pneumatic / Electric Type)

Increasing **ESG** ratings, increasing **Risk Assessment** scores,
Prevention of **Serious Accident**

ELECTRIC TYPE



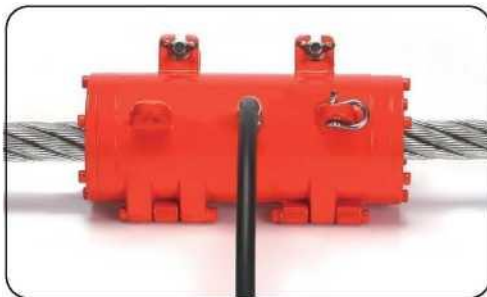
- PNEUMATIC TYPE



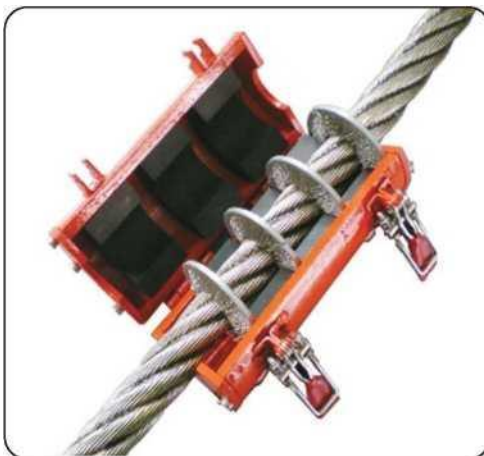
Model	Capacity	Ratio	Weight
WL-40A	40Liter	55:1	22(Kg)



■ Seal Wire Rope Diameter 8 - 100Ø



■ Select one size



KOREA Nany Base Antenna Rope
Grease Injection

Cargo Hold Cleaning Solution



Hold Cleaning Machine

Specification	Model	CH-1000
Dimension(LxWxH)		600(L) x 1000(W) x 1300(H)mm
Weight		400kg
Medium		Sea water (or Fresh water)
Type		Pump System
POWER		15HP 11KW
Electric supply(voltage)		440V 3P

ACCESSORIES



Hold Cleaning Jet



Specification	Model	PUMP
Piston count (Horizontal type)		3
Power train method		V belt (B type 2 or 3 pcs)
Dimension(LxWxH)		598(L) x448(W) x553(H)mm
Weight		58kg
Crank stroke (PCD)		34
Rotating Count (RPM)	Standard	750
	Max	1200
Pressure (Kg/cm2)	Low	10
	Standard	25
Absorption amount(L/min)	Max	35
	Standard	63.9
Required Power (kg/cm2)	Low	98
	Standard	3.5
Lubricant oil capacity (L)	Max	5.0
	Standard	6.0
		1.3

Standard Accessories

• PUMP SYSTEM	1 UNIT
• WATER TOBEY	1 UNIT
• HIGHPRESSURE HOSE	20 MTR
• CAM LOCK 2"	1 EA
• REPAIR KIT (SEAL, COVER, VALVE)	1 SET
• CABLE	10 MTR

CARGO HOLD CLEANING SOLUTION

We developed for more convenient and easy cargo hold cleaning without crain. It is portable type that is easy to move around for crews to use.

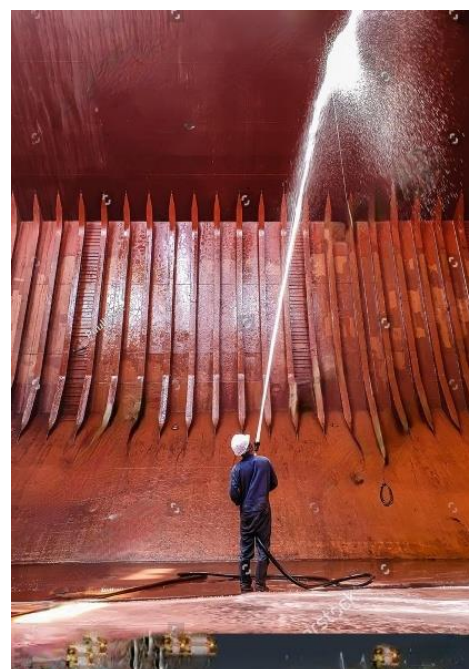
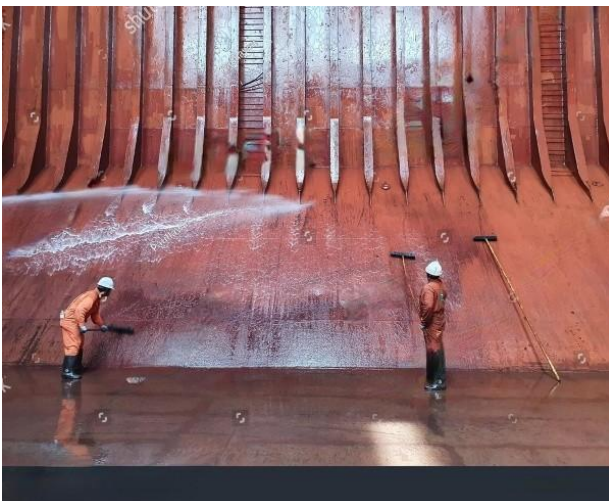
Feature & Advantance

- High quality & reasonable prices
- Self-absorbing function
- Light weight
- High pressure pump is easy to assemble & maintenance
- Simple operation
- Clean high flow rate up to a high position

We are specialized in high pressure machine and a lot of marine equipment for ship. So we have confidence and responsibility for items.

Plese don't hesitate to contact us.
We always welcome any question.

Best your partners,



Winch Break Test Kit(Triangle Type)

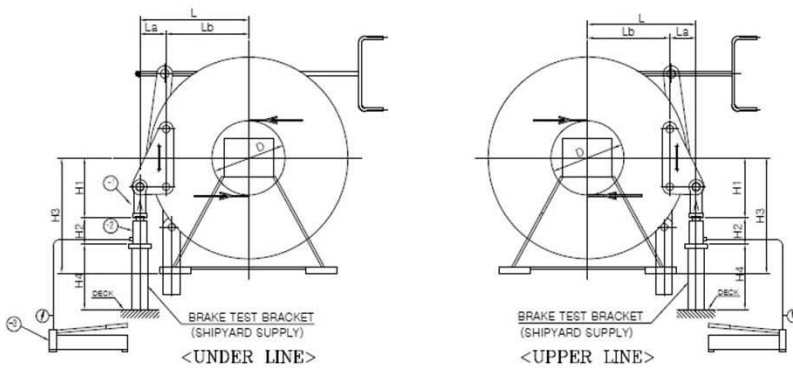
Increasing ESG ratings, increasing Risk Assessment scores,
Prevention of **Serious Accident**

STANDARD ACCESSORY

HYDRAULIC PUMP , HYDRAULIC RAM , RAM ADAPTOR , WINCH ADAPTOR , H/T BOLT NUT SET



INSTRUCTION FOR BRAKE TEST



H1 : 465 mm
H2 : 180 mm
H3 : 1000 mm
H4 : Confirm to yard

TEST PROCEDURES

1. Before brake test, check that the brake lining surface is continuously touched on brake drum.
2. Tighten the brake of testing drum surely and disengage the clutch.
3. Install the test kit with pins.
4. Put the hydraulic jack on the lower edge point of the test kit. Adjust the height of hydraulic jack on foundation.
During jack up operation, it is necessary to tight the brake handle again.
5. While paying attention to each part, raise the pressure by hand operated pump and read the scale of attached pressure gauge
6. Brake holding capacity can be found the value gained from pressure gauge.
7. After the test is finished, operate it in the reverse procedure of above description.

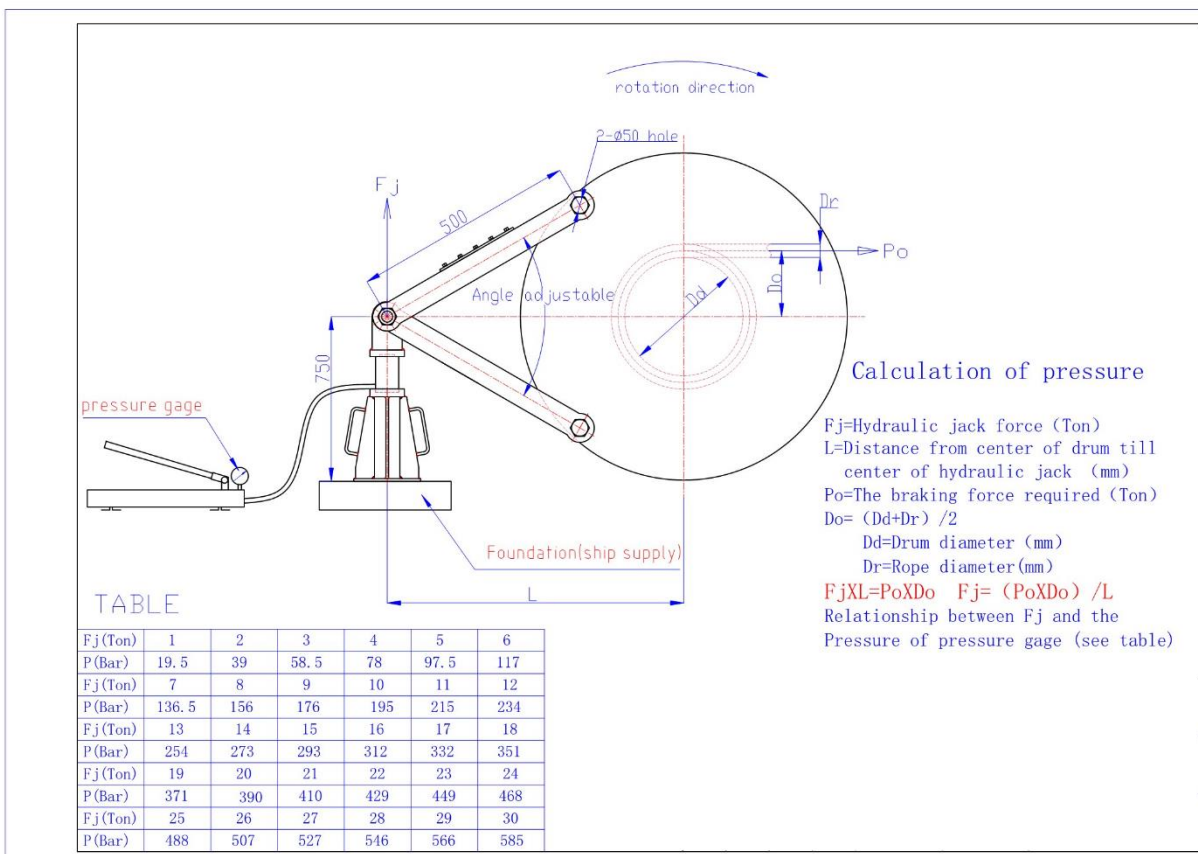
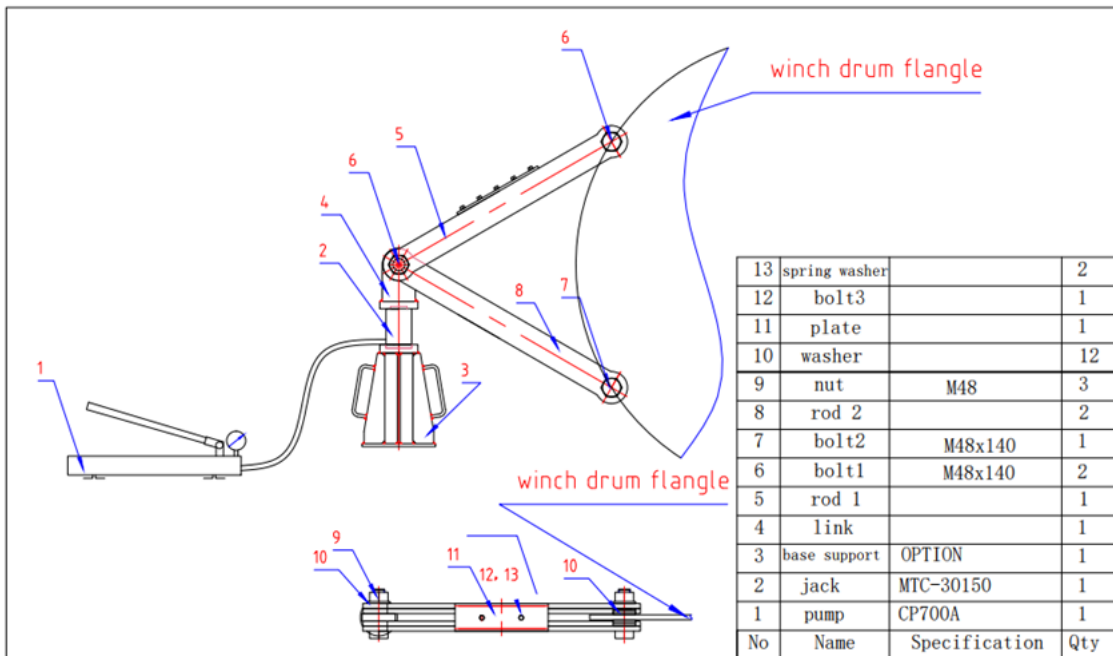
WARNING

Prepare a brake test bracket which is strong and stable enough to support the force.
After making sure that the brake test bracket is set on a level, operate the hand pump carefully enough not to work off the brake test bracket.
If the brake test bracket is worked off, you may encounter injury.

NO.	PART NO.	PART NAME	MAT'L	Q'TY	REMARKS
1		BRAKE TEST KIT ASS'Y		1	OWNER SUPPLY
-1		BRAKE TEST KIT		1	
-2		HYD. JACK		1	
-3		HAND PUMP WITH HOSE		1	

Winch Break Test Kit(X-Type)

Increasing ESG ratings, increasing Risk Assessment scores,
Prevention of **Serious Accident**



Pneumatic PORTABLE DUST COLLECTOR

Increasing ESG ratings, increasing Risk Assessment scores,
Prevention of **Serious Accident**



Feature

1. Operating with compressed air.
2. Turn the turbofan into the dust collector at high speed Occupational dust inhalation.
3. Clean air removed from dust is discharged to the outside of the dust collector.
4. Air dust collectors perform convection circulation in an enclosed space, removing dust from the workplace and purifying the air cleanly in a short time.
5. Unlike conventional air and electric fans
DUCT HOSE NOT REQUIRED

Specification

FAN SIZE (mm)	HP	RPM	MAX. FLOW (m ³ /h)	DIMENSION (mm)	WEIGHT (kg)
280	3.3	3600	2100	320*360*1000	20
400	5.5	1750	6780	460*500*1500	45

Air Combination Unit



Turbo Fan



Collecting Tank



Garbage Compactor

Electric type (ships/land)



Model	KA200/13
Pressure	2,000 kg(2 Ton)
Garbage Capacity	105Liter
Pressure Time	38 second
Volume Reduction Rate	50 ~ 70% Over
Operation Method	Control by Lever
How to put garbage	Manual
Rubbish Bag Size	100Liter
Voltage	110V / 220V / 380V / 440V
Motor output	7.5HP
Hydraulic (Ambient Temperature: 0~30°C)	L - HM 46
Dimension(L X W X H)	900 * 920 * 1800 mm
Weight	185kg

Pneumatic (air) type (ships/land)



Model	TA2000
Pressure	2,000 kg(2 Ton)
Garbage Capacity	105Liter
Pressure Time	38 second
Volume Reduction Rate	50 ~ 70% Over
Operation Method	Manual
Operation Method	Control by Lever
Rubbish Bag Size	105Liter
Compressor output	2HP (110V / 220V / 380V / 440V)
Type of hydraulic oil used	Hydraulic Oil not used
Dimension(L X W X H)	900 * 920 * 1800 mm
Weight	185kg

Electric High Pressure Cleaner



Specification	KE150/13	KE200/15	KE300/20	KE500/13	KE1000/15	KE1000 - KE2500
Dimensions (Width X Length X Height)mm	700X500X990	700X500X990	950*550*950	950*550*950	1600*1000*1300	custom order
Discharge per minute (Liter/minute)	13	15	20	13	15	custom order
Working pressure (Bar)	150	200	300	500	1000	custom order
Max pressure (Bar)	170	220	310	510	1010	custom order
Output (Kw/Hp)	5.5(7.5)	7.5(10)	15(20)	15 (20)	30 (40)	custom order
Single-phase/three-phase voltage (V)	(220/380/440)	(220/380/440)	(380/440)	(380/440)	(440)	custom order
Weight(Kg)	58	58	98	98	560	custom order

Pneumatic High Pressure Cleaner

Increasing ESG ratings, increasing Risk Assessment scores, Prevention of **Serious Accident**



Specification	KA200/13	KA500/13
Dimensions (Width X Length X Height)mm	700X500X990	700X500X1290
Discharge per minute (Liter/minute)	13	13
Working pressure (Bar)	200	500
Used Compressor Output (HP)	50	20
Weight(Kg)	58	98

Portable Pneumatic/Air Winch Crane

Increasing **ESG** ratings, increasing **Risk Assessment** scores, Prevention of **Serious Accident**



Crane Type	Lifting	Speed	Wire Rope	Weight
CKA-100	100KG	20M/MIN	3MM X33M	60KG
CKA-150	150KG	15M/MIN	3MM X33M	75KG
CKA-200	200KG	15M/MIN	4MM X33M	85KG
CKA-250	250KG	12M/MIN	5MM X33M	85KG
CKA-300	300KG	10M/MIN	5MM X33M	85KG
CKA-500	500KG	10M/MIN	6MM X33M	90KG
CKA-600	600KG	10M/MIN	6MM X33M	90KG
CKA-700	700KG	10M/MIN	6MM X33M	90KG
CKA-1000	1000KG	6M/MIN	6MM X33M	150KG
CKA-2000	2000KG	3M/MIN	6MM X33M	190KG

Portable Pneumatic/Air Winch Crane(Frame reinforced)

Increasing **ESG** ratings, increasing **Risk Assessment** scores, Prevention of **Serious Accident**



Crane Type	Lifting	Speed	Wire Rope	Weight
CKP-100	100KG	20M/MIN	3MM X33M	80KG
CKP-150	150KG	15M/MIN	3MM X33M	95KG
CKP-200	200KG	15M/MIN	4MM X33M	105KG
CKP-250	250KG	12M/MIN	5MM X33M	105KG
CKP-300	300KG	10M/MIN	5MM X33M	105KG
CKP-500	500KG	10M/MIN	6MM X33M	110KG
CKP-600	600KG	10M/MIN	6MM X33M	110KG
CKP-700	700KG	10M/MIN	6MM X33M	110KG
CKP-1000	1000KG	6M/MIN	6MM X33M	170KG
CKP-2000	2000KG	3M/MIN	6MM X33M	210KG

Pressurizing Pump of RO(Reverse Osmosis)System for Seawater desalination(Ship, Plant)

→ If it have a drawing of product installed on the ship, a replacement product can be manufactured.



Model : SP60 HIGH PRESSURE PUMP SYSTEM
Pressure: 60 bar (kg/cm²) Flow : 92 ℓ/min

Reference

Saudi Arabia Seawater Desalination Plant (2018)

Portable Automatic water and liquid Suction and discharge (drain type) wet air cleaner

Increasing **ESG** ratings, increasing **Risk Assessment** scores,
Prevention of **Serious Accident**



Specification

Product Data	SAW100(100Liter)
Description(WxDxH)	1200X650X1630MM
Tank Size(Liter)	100
Tank Capacity(liter)	75
Degree of Vacuum(Kpa)	78
Air consumption(M3/MIN)	5
Air suction capacity(NM3/HR)	318
Weight(Kg)	68
Duct Hose Length(M)	30
Duct Hose Bore(MM)	50
Decibel(Db/A)	75
Water Suction capacity(M3/HR)	6
Material	High strength P.P / Stainless

VIDEO(Youtube link address)

<https://www.youtube.com/shorts/yifmSGI1Xac>

Vacuum Garbage Collector(Engine Type)



Model	VC1200
Dimension	590 x 740 x 1400mm
TYPE	Engine(Gasoline)
Material	Plastic
Weight	35KG

Magnetic Ladder Locker(LLM-300)

Increasing **ESG** ratings, increasing **Risk Assessment** scores,
Prevention of **Serious Accident**

Pilot Ladders Safety Magnet Locker

Magnet type LLM-300



Ocean-going vessel is anchored in line for the purpose of boarding and disembarking, which unloaded the ladder, where the person writing up a ladder left and right, up and down as badly shaken.

This product is a magnet fixed device type rope ladder

Each 250 ~ 300kgf / cm² rope ladder to the power of

It is fixed on both sides,

Used for the purpose of preventing flicker.

Pulling up on the handle, 5 ~ 10kgf / cm² force

Easy attachment and removal

Down to make the handle, 300 ~ 320kgf / cm² power fixed.

Model	Painted	Material	Lift rating (kgs)	Pull rating (kgs)	Description (W x L x H)	Weight (kgs)

Pneumatic Ladder Locker(LLP-300)

Increasing **ESG** ratings, increasing **Risk Assessment** scores,
Prevention of **Serious Accident**

Aluminum alloy Accommodation ladders Safety Pneumatic Locker
Pneumatic type LLP-300



Of ocean-going vessel anchored for the purpose of boarding and disembarking to unload Pilot Ladders and Accommodation ladders, which up to this time in writing Accommodation ladders people left and right, up and down as badly shaken.

Ladders Safety Pneumatic Locker products using air outer wall of the vacuum pad hull 300 ~ 320kgf / cm^2 Accommodation ladders attached to the strength of the bottom end of the rope or sling fixed ladders Safety Pneumatic Locker purpose to prevent the shake to use.

When you close the air supply lever 0kgf / cm^2 easy detachable power and air supply lever to open the 300 ~ 320kgf / cm^2 power fixed.

Compressor is available 1HP (air consumption 118 Liter / min, working pressure 4kgf / cm^2 or more) is enough.

Model	Painted	Material	Lift rating (kgs)	Pull rating (kgs)	Description (W x L x H)	Weight (kgs)
LLP-300	Powder coating	S.Steel	300	320	250 x 240 x 100	3.0

Mobile Pneumatic/Air Winch Crane (Left and right axis 180 degree rotation type (automatic rotation))

Axis rotates 180 degrees
left and right
(automatic rotation)



Increasing **ESG** ratings, increasing **Risk Assessment** scores,
Prevention of **Serious Accident**

Mode	Lifting	Speed	Wire Rope	Weight
CKR-100	100KG	20M/MIN	3MM X 33M	90KG
CKR-150	150KG	15M/MIN	3MM X 33M	110KG
CKR-200	200KG	15M/MIN	4MM X 33M	110KG
CKR-250	250KG	12M/MIN	5MM X 33M	110KG
CKR-300	300KG	10M/MIN	5MM X 33M	130KG
CKR-500	500KG	10M/MIN	6MM X 33M	130KG
CKR-1000	1000KG	6M/MIN	6MM X 33M	150KG
CKR-2000	2000KG	6M/MIN	6MM X 33M	190KG

Features and Benefits

- When a worker moves a heavy object from side to side, it can be moved automatically to prevent worker safety accidents.
- It is more economical than a jib crane (fixed type) and can be used in many places as it is mobile.
- It has high cost performance compared to air balance
- Can be used in explosion-proof areas where electricity is difficult to use
- No electric shock/fire hazard



Small Ceiling Wall Floor fixed Winch

Increasing **ESG** ratings,
increasing **Risk Assessment** scores,
Prevention of **Serious Accident**

Mode	Lifting	Speed	Wire Rope	Weight
CKS-100	100KG	20M/MIN	3MM X 33M	25KG
CKS-150	150KG	15M/MIN	3MM X 33M	25KG
CKS-200	200KG	15M/MIN	4MM X 33M	25KG
CKS-250	250KG	12M/MIN	5MM X 33M	25KG
CKS-300	300KG	10M/MIN	5MM X 33M	25KG
CKS-500	500KG	10M/MIN	6MM X 33M	25KG

Product Features

- Operates on compressed air without an electric motor
- Small in size and light in weight, can be used in various places
- Small / light in weight, easy to attach and detach
- Size (Width X Length X Height): 350X350X380mm



| Address : 107, 2B-dong, Jisa-dong, Gwahaksandan 1-ro 60-31,
Gangseo-gu, Busan, South Korea

| Tel : +82-51-903-1302

| M.P : +82-10-9311-1302

| Email : sales@mrovia.com

| Website : www.cktech2b.com

QR CODE SCAN



If you search MROVIA on
YouTube, you can be sure of
various product videos

VIDEO(Youtube link address)

ATEX explosion-proof certified wet-dry type
explosion-proof air cleaner

Oil, water, sand, screw, foam removal

<https://youtu.be/fB6TRiiggsLo>

3D printer powder removal

<https://youtu.be/voaljKl8ivA>

Heaving Line Thrower

<https://youtu.be/4FFdCwqrbmE>

Mobile Air Winch Crane

<https://youtu.be/CWYxV3Etwil>

Small Air Winch Crane

<https://youtu.be/VHHeiZiSndM>

Garbage Compactor

<https://youtu.be/LvuxSnrYPBg>

High pressure washer(1000Bar)

<https://youtu.be/Q8K4NoIHuVU>